

N

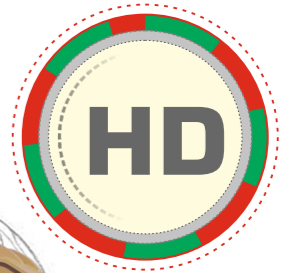
SANY
SANY INDIA NETWORK

SANY
Quality Changes the World



Operating Weight: 24200 kg Bucket Capacity: 1.2 - 1.4 m³ Engine Power: 173 HP(128.5 KW)/ 2100 rpm

**EXCELLENT PERFORMANCE
HIGH RELIABILITY
EASE OF SERVICEABILITY**



SANY HEAVY INDUSTRY INDIA PVT. LTD.

HEAD OFFICE
Address : Plot No. E-4, Chakan Industrial Area Phase-III,
Village Kuruli, Taluka Khed, District Pune - 410501,
Maharashtra, INDIA.
Tel : +91 21 35670288, Fax: +91 21 35670300
E-mail : customer@care.sany.in
Website : www.sany.in
Toll Free No.: 1800-209-3337



Material & specification are subject to change without prior notice in accordance with our continuous technical innovations. Featured machines in photos may include additional equipment.



**SERIES 9
SY240C
HYDRAULIC EXCAVATOR**

The C-9 series of excavators developed by SANY adopts major breakthroughs ranging from power system to control system for high efficiency and energy savings. This, in addition to insistence on 'Quality-In-Everything-We-Do', has delivered the world-class excavators best suited for the multitude of your work requirements with superior advantages of uninterrupted operations, unmatched productivity at better fuel economy, helping you make more profits.



EXCELLENT PERFORMANCE

SY240C-9 HD excavator is built with well-renowned Isuzu engine and superior synchronization with advanced hydraulic system offering best balance of performance demands and fuel economy to suit job requirements and application.



HIGH RELIABILITY

Sany design and manufacturing capabilities have resulted into durability with improved life of components and longer service life.



BEST IN CLASS OPERATOR COMFORT

The machine is featured with comfortable seating arrangement, optimized cabin space, wider visibility, safety grills and easy access to switches. Overall, the new cabin provides comfortable and safe environment for the operator.



EASE OF SERVICEABILITY

With superior attention to details, smart provisions are made for easy serviceability and simplified maintenance that results into improved uptime.



REMOTE MONITORING SYSTEM

Remote monitoring system, called EVI, installed in the machines helps in tracking various working parameters. This information can be used for improving site efficiency, maximizing operating performance while reducing maintenance costs.



EXCELLENT PERFORMANCE

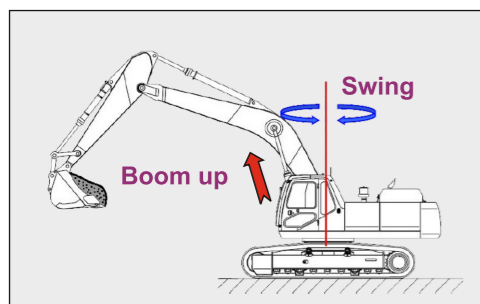
SANY SY240C-9HD excavator is designed for excellent performance with combination of best in class productivity and superior fuel economy.

BOOSTED PRODUCTIVITY

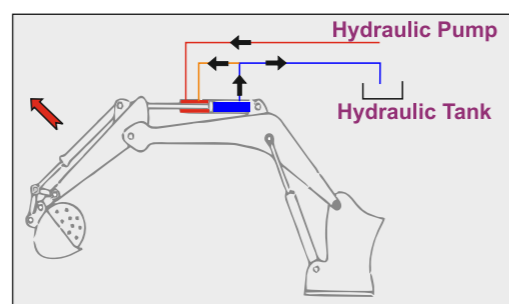
- POWERFUL ENGINE**
SY240C-9HD is powered by well renowned Isuzu engine with exceptional work capacity and optimize fuel economy for moving heavy material quickly and efficiently.
- ADVANCED HYDRAULIC SYSTEM**
When the machine deals with an operating requirement of moving heavy material quickly and efficiently, it needs the best hydraulic power that SY240C-9HD offers.
The advance control valve which has been thoroughly optimized provides excellent performance in combined operations.
Hydraulic valves ensure that oil flow is available at the point of priority as per required flow. This results in the best available power with optimum fuel consumption.
During boom lowering & arm opening operation, regeneration feature results into faster movement by routing oil through regeneration valve. It prevents cavitation and enhances cylinder performance. This reduces friction losses, pressure drops ensuring more power to the ground for heavy duty applications.

SUPERIOR FUEL EFFICIENCY

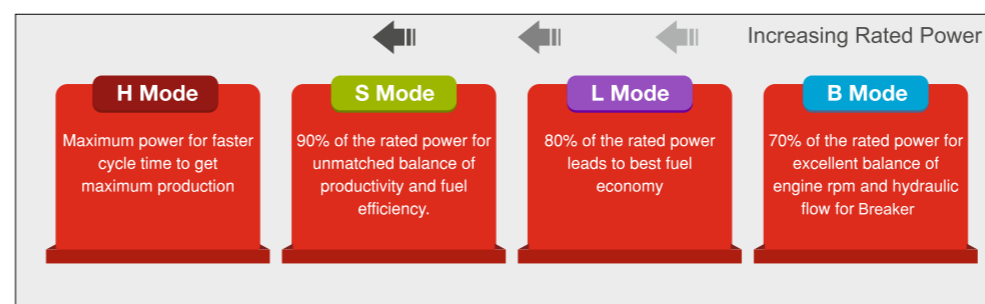
- DYNAMIC OPTIMIZATION MATCHING CONTROL SYSTEM (DOMCS)**
DOMCS ensures quick response to the change of operating variables in order to achieve optimum engine performance as per the external load demand facilitating the optimum control of excavator external load operation system.
- WORK MODES AND AUTO IDLE**
SY240C-9HD is equipped with four working modes (H, S, L, B) to match engine speed, pump speed and system pressure with versatile work application. Automatic idle function reduces fuel consumption significantly leading to reduced operating cost.



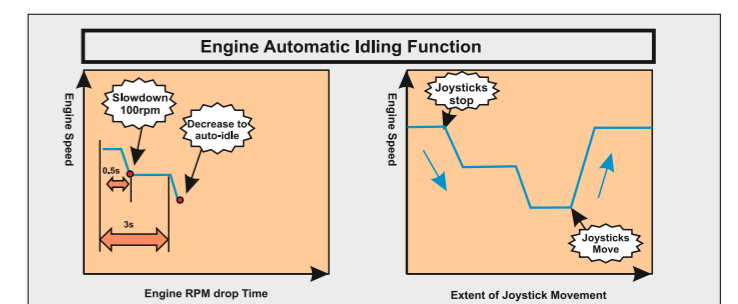
Boom Priority System



Regeneration System



Power Mode System



Auto Idle System

HIGH RELIABILITY

The boom and arm is made of large box-type structure welded with high strength steel sheet. Welded plates for excellent torsional resistance inside the structure leads to unmatched durability that prevents deformation under harsh conditions.

ROBUST STRUCTURE

REINFORCED BOOM

Robotically welded, heavy-duty boom is designed for best distribution of load throughout the boom structure which reduces lateral stress by 10% during the boom swing.

REINFORCED ARM

Arm's rear support is specially reinforced offering excellent torsional resistance imparting greater strength to the arm assembly for longer lifetime.

WEAR RESISTANT BUCKET

High strength bucket surface gives longer service life. Optimized design helps in reducing rock and sand resistance in turn decreases wear of the bucket body while digging.

HIGH STRENGTH UPPER FRAME

Heavy duty upper frame is designed to improve bending strength of the platform. D-shaped large section stronger beam can withstand external shocks.

ENHANCED UNDERCARRIAGE

Undercarriage is made up of high strength alloy steel with good wear resistance and durability.

X-TYPE FRAME AND BOX TYPE STRUCTURE

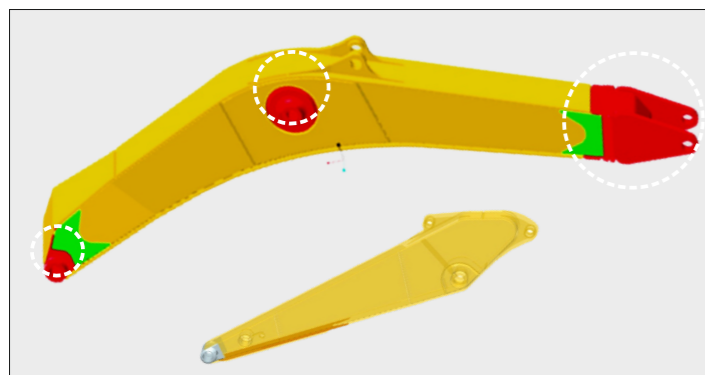
It has high strength and stiffness with excellent torsional and bending resistance. Reinforcing plate has been added to improve the strength of the lower frame. This improves working life.

STRENGTHENED TRACK

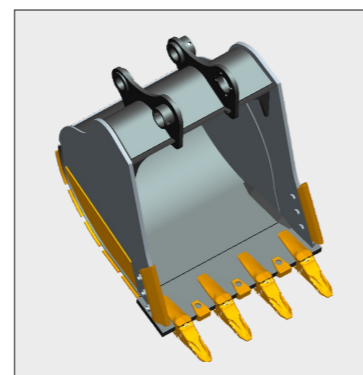
Anti-collision ribs have been added to improve its capacity of anti-deformation and protect the guide pulley.

Increased size of oil chamber of Idler improve performance of floating seal results into effective life.

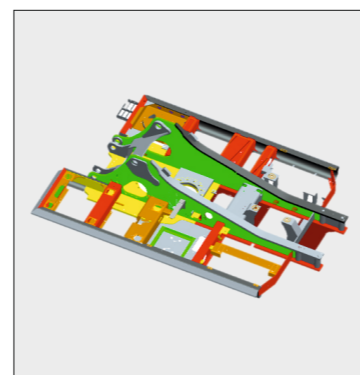
Roller body is modified to heavy duty structure resulting into enhanced load bearing capacity.



Boom & Arm



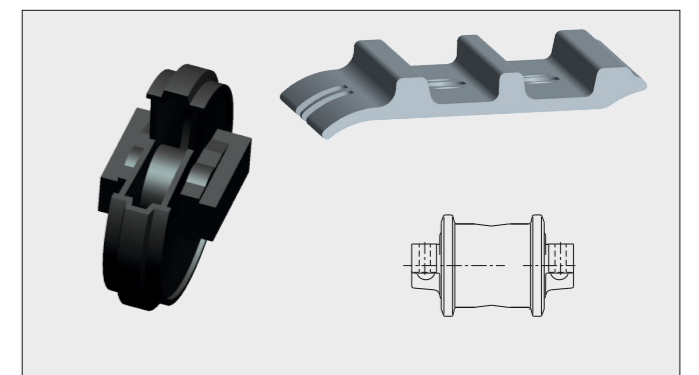
Bucket



Upper Frame



X Type Frame



Idler & Strengthened Components



BEST IN CLASS OPERATOR COMFORT

Newly designed spacious air conditioned cabin is equipped with weight indication adjustable suspension seat. Height, backrest inclination, armrest height, rear cushioning of the seat is designed for operator comfort. This reduces operator fatigue and enhances working efficiency.

COMFORT

MULTI-DUCT AIR CONDITIONING SYSTEM

The standard large capacity air conditioner keeps in-cab air fresh by purification & recirculation which reduces operator fatigue.

ADVANCE SILICON RUBBER SHOCK ABSORBERS

Cabin bearing is attached to upper frame with silicone viscous shock absorber which effectively dampens vibrations while enhancing operator comfort.

PRESSURIZED HERMETIC CABIN

Cabin is air tight sealed and is dust free. It prevents dust entry into cabin gadgets by maintaining pressure variation between cabin and outside atmosphere.

ERGONOMICALLY DESIGNED JOYSTICK

Control levers and joysticks control are smartly designed for horizontal and vertical stroke of joystick for low lever effort.

HIGH STRENGTH ROOF TOP

The top plate of cabin is punch-formed with thick high-strength steel sheet integrated with reinforced ribs which offers excellent deformation-resistance resulting into operator safety in tough environments.

CLEAR VISIBILITY

Larger windows of the newly-designed spacious cabin provide you with a wider view. The operator can clearly see the work equipment condition and the surrounding through the front, side and back windows.

SAFETY HEAT SHIELD AND FAN COVER

Turbocharger and engine radiator are insulated with heat resistant cover. Engine radiator fan is fully enclosed with wire-mesh to reduce risk of accidents.

OTHER SAFETY PROVISIONS

Operator's cabin is equipped with safety hammer, fire extinguisher, seat belt, protective fence, hydraulic pilot lock.



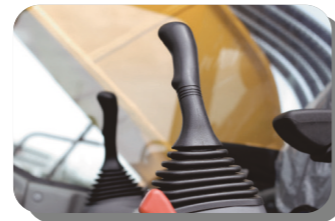
AC Duct



Shock Absorber



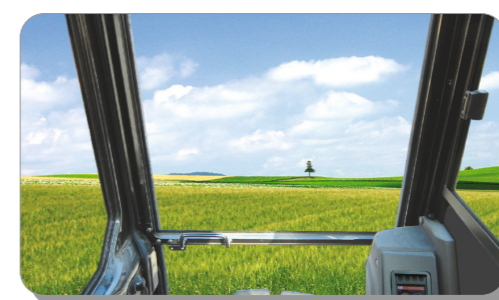
Seat Adjustment



Joystick



Cabin Roof Top



Visibility



Fan Cover



Safety Hammer

EASE OF SERVICEABILITY

The use of OEM parts and quality elements effectively extends the service life and maintenance intervals. The time for maintenance is also reduced. Remote installation of replacement parts gives easy maintenance, higher utility and lower service cost.

EASY ACCESS

FILTER REPLACEMENT COMFORT

Access to the various filters (engine filter, pilot filter and A.C. filter) is very easy being mounted in hydraulic pump compartment for making cleaning easier.

EASY CLEANING FOR RADIATOR

Radiator and oil cooler packing is easily washable which leads into excellent cooling capacity and ensures prolonged engine running without being overheated.

DRAIN PLUG ARRANGEMENT

Radiator, fuel tank, hydraulic tank and engine oil pan are provided with drain-plug at the bottom to flush out the debris and waste liquids at the time of oil replacement and cleaning. The tank bottom has drain plug guard to prevent physical damage.

TWO-LEVEL FUEL FILTER

The fuel filter system is conveniently placed for easy access with two level filtration and additional strainer filter which removes contamination from fuel. This kind of filtration system prolongs engine life.

EASE OF REGULAR CHECK UP

Regular performing components (swing gear greasing, engine oil and hydraulic oil) of the machine can be easily checked up which leads to time saving and long working ability.

LARGE LCD COLOR DISPLAY

Cabin is equipped with waterproof, dust proof and vibration proof anti-interference colour LCD display which provides real-time information regarding machine working status, abnormal alarm function etc. ensuring safe operation.

IMPROVED GREASING

Graphite infused bushes are provided for prolonged greasing interval. Centralized greasing points are provided for easy greasing of various points of boom assembly.

FLOATING BUSH PROVISION

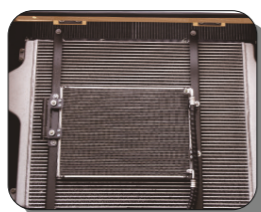
Floating bush and shim arrangement are provided in bucket for easy and quick adjustment.



Air Filter



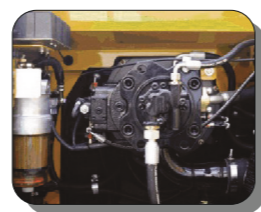
AC Filter



Radiator



Drain Plug



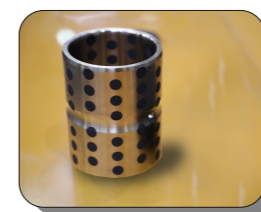
Water Separator



Engine Oil Level Check-up Access



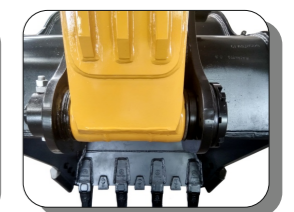
Color Monitor



Graphite Bush



Centralized Greasing Points

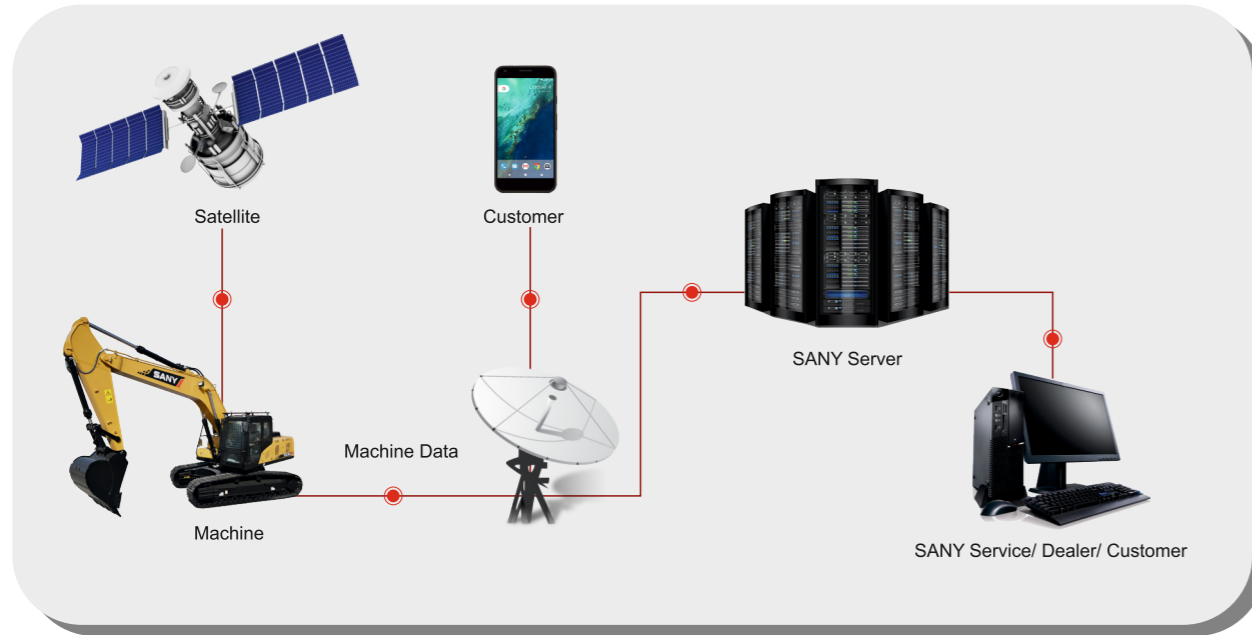


Floating Bush Provision



EVI REMOTE MONITORING

EVI in SANY C-9 series excavators is a sophisticated system that helps you to remotely monitor wide range of excavator functions and access operating information.



By 05-02-2016 08:43:58,the machine[15SEY008105571] Total working hour is:502.35 This time working hour is:0.00Longitude is: 0Latitude is:0; Gear position is:0; Engine speed is:0; Fuel level: 52.53722; [SanyEVI]

By 05-02-2016 09:16:47,the machine[15SEY008104671] Total working hour is:395.45 This time working hour is:0.02 Address: Kamakhyanagar Dhenkanal Road, Mahulapal, Odisha 759018, India; Gear position is:0; Engine speed is:-22.4524; Fuel level:76.30292; [SanyEVI]

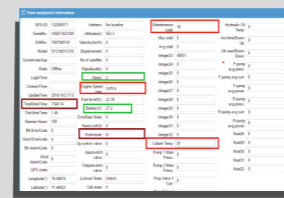
Daily SMS updates

1. Hour Meter Reading
2. Machine run on that particular day
3. Location of the machine
4. Engine speed & Gear Position
5. Fuel Level



MACHINE OPERATING MANAGEMENT

Daily machine operation hours, non-working hours, engine idling time can be monitored and remaining fuel in the diesel tank can be determined.



REAL-TIME MONITORING

The real-time monitoring system displays various operating parameters like hydraulic oil pressure, engine rpm, working mode along with selected gear, coolant temperature, voltages and current etc.



LOCATION & TRACKING

Machine's current location can be captured for easy tracking.Route to working site of the machine can be determined as well.

TECHNICAL SPECIFICATIONS

ENGINE	
Model	Isuzu CC-6BG1TRP
Type	6 Cylinder, Inline, Water Cooled
Rated Engine Power	173HP(128.5 kW) @ 2100 rpm
Max. Torque	637.9 N.m @ 1800 rpm
Battery	2 X 12 V
Displacement	6.49 L

CONTROL SYSTEM	
Control System	DOMCS Intelligent Controller
Control Hydraulic System	Positive Flow
Working Modes	H, S, L, B
Remote Monitoring System	GPRS, GPS, GIS

HYDRAULIC SYSTEM	
Main Pumps	2 Variable Displacement Axial Piston Pumps
Max. Flow	2 X 246 lpm
Pilot Pump	1 Gear Pump
Travel Motor	2 Axial Piston Motor with Parking Brake
Swing Motor	1 Axial Piston Motor with Swing Holding Brake

RELIEF VALVE SETTINGS	
Implement Circuit	34.3 Mpa
Swing Circuit	25.5 Mpa
Travel Circuit	34.3 Mpa
Pilot Circuit	3.9 Mpa

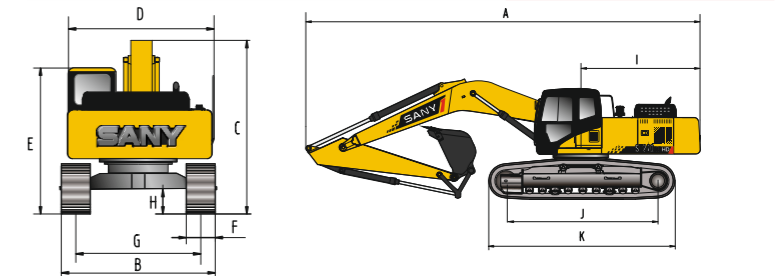
UNDERCARRIAGE & WORKING DEVICE	
Track Shoes (Each Side)	49
Upper Roller (Each Side)	2
Lower Roller (Each Side)	9
Track Guard (Each Side)	2
Std. Track	600 mm
Std. Boom	5900 mm
Std. Arm	2900 mm
Std. Bucket	1.2 m³ HD

PERFORMANCE	
Max. Travel Speed(High/Low)	5.5/3.5 km/h
Swing Speed	11 rpm
Grade ability	70% / 35°
Ground Pressure	47.6 kPa
Max. Tracking Force	209 kN
Bucket Digging Force	175 kN
Arm Digging Force	122 kN

SERVICE REFILL CAPACITIES		
Hydraulic Tank	239 L (Tank)	201 L (Refill)
Fuel Tank	340 L	
Engine Oil	24.5 L	
Radiator	29 L	
Swing Device	5.3 L	
Travel Device	2×5.0 L	

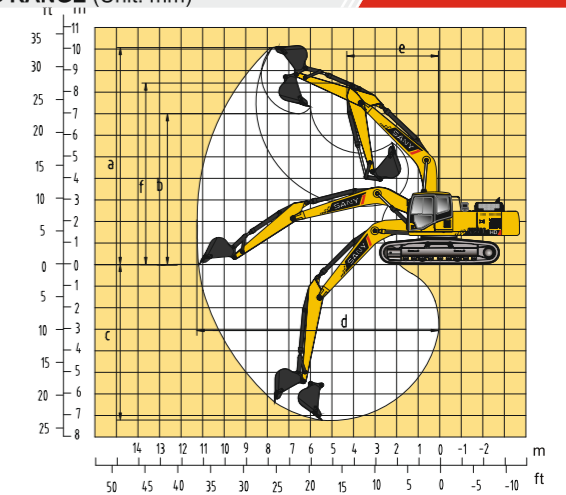
CAB	
AC	Std.
Cabin Guard	Opt.

DIMENSION (Unit: mm)



DIMENSION (Unit: mm)	Arm 2900	Arm 2500
A. Overall Length	9920	9920
B. Overall Width	2980	2980
C. Overall Height	3550	3550
D. Upper Width	2710	2710
E. Overall Height of Cab	2990	2990
F. Std. Track Shoe Width	600	600
G. Track Gauge	2380	2380
H. Min. Ground Clearance	440	440
I. Rear-end Swing Radius	2890	2890
J. Distance between Tumbles	3640	3640
K. Under Carriage Length	4445	4445

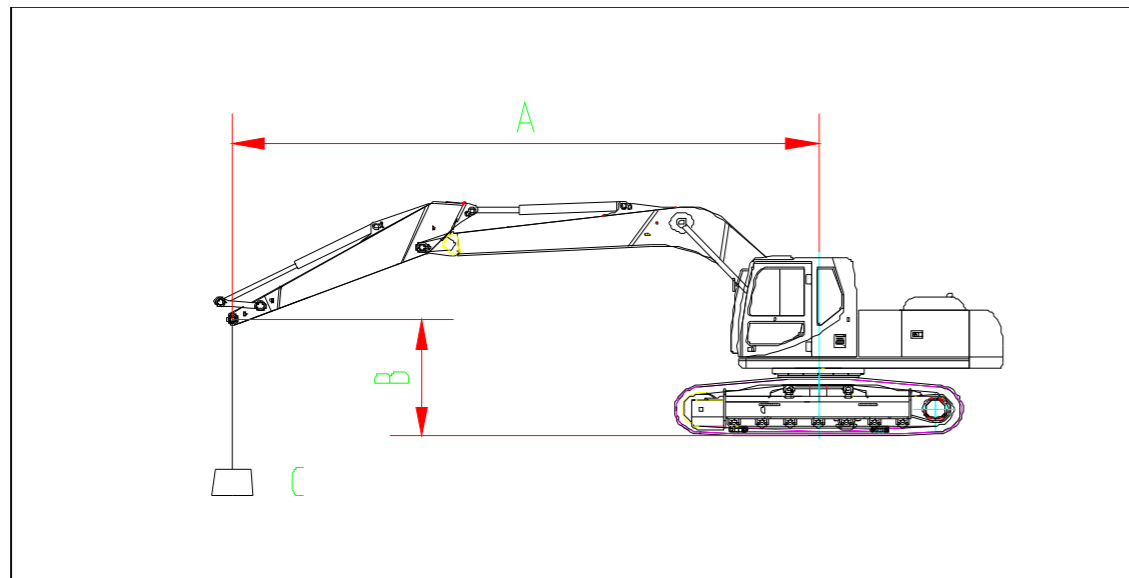
WORKING RANGE (Unit: mm)



WORKING RANGE	Arm 2900	Arm 2500
a. Max. Cutting Height	9640	9270
b. Max. Dumping Height	6725	6405
c. Max. Digging Depth	6785	6340
d. Max. Digging Reach	10150	9690
e. Min. Swing Radius	3800	3915
f. Max. Height at Min. Swing Radius	7940	8125

BUCKET				
Capacity	Width (mm)	Weight (kg)	Arm Length	
			2.9m	2.5m
1.2 m³ HD-Std.	1312	928	✓	✓
1.4 m³ GP-Opt.	1609	1075	-	✓

LIFTING CAPACITY



Road Lifting Capacity (Kg)														
	A B	3.0m		4.5m		6.0m		7.5m		9.0m		Maximum		
		☐	⊖	☐	⊖	☐	⊖	☐	⊖	☐	⊖	☐	⊖	mm
Arm 2900mm	7.5m					5103	5103					3612	3612	6275
	6.0m					6115	5201					3613	3613	7360
Boom 5900mm	4.5m					6930	4985	5198	3514			3562	3136	8025
	3.0m			10195	7057	7102	4691	5050	3378			3659	2844	8370
Balance weight 4800kg	1.5m			10524	6497	6788	4411	4894	3235			3887	2727	8435
	0	7166	7166	10179	6206	6571	4217	4777	3128			4195	2759	8230
	-1.5m	11516	11504	10084	6126	6476	4134	4735	3089			4548	2974	7730
	-3.0m	17595	11697	10159	6190	6512	4165					5395	3508	6870
	-4.5m	17242	12080	10421	6410							7660	4895	5485

- Remarks:
1. Rated figure meets the criterion of GB/T 13331-2005/ISO 10576
 2. Rated rollover loading is 75% of static rollover loading, rated limiting hydraulic weight is 87% of limiting hydraulic weight.
 3. Loading radius is the distance from the loading point to the swing center.
 4. The figure with *stands for the rated figure of the limiting hydraulic weight.

PRESSURE AND CAPACITIES

WEIGHTS AND GROUND PRESSURE

Shoe type	Shoe width	Model SY240C-9HD	
		Operating weight	Ground pressure
Triple grouser	600mm	24200 kg	47.6 Kpa

STANDARD EQUIPMENT

- ENGINE**
 - Mode control (H, S, L and B)
 - Start motor 24V/4.5KW
 - Alternator 50A
 - Air pre-cleaner
 - Dry double-filtering air cleaner
 - Cylindrical engine oil filter
 - Cylindrical fuel filter
 - Engine oil cooler
 - Radiator with protective screen
 - Auxiliary water tank for radiator
 - Fan cowl
 - Separately installed engine
 - Automatic deceleration system
 - Accelerating system
- HYDRAULIC SYSTEM**
 - Working mode selection switch
 - Power enhancement device
 - Control valve with main relief valve
 - Spare oil port for control valve
 - Strainer
 - Return oil filter
 - Pilot filter
- FRONT WORK EQUIPMENT**
 - Flange pin
 - Bucket clearance adjustment
 - Welded lever
 - Central lubrication system
 - Dust ring-seal of bucket pin
 - Fully-welded box boom
 - Fully-welded box arm
 - Guard
 - Standard bucket
- UNDERCARRIAGE**
 - Travel brake
 - Travel motor guard
 - H-track guiding mechanism
 - Hydraulic track tensioner
 - Bolted sprocket
 - Carrier roller and track roller
 - Reinforced track link with pin and seal
 - 600 mm track shoes
 - Bottom cover plate
 - Reinforced side pedal
- SWING PLATFORM**
 - Fuel level float
 - Hydraulic oil level gauge
 - Toolbox
 - Rear view mirror (R)
 - Swing brake
- AIR CONDITIONING SYSTEM**
 - Air conditioner
 - Air conditioner control panel
 - Fresh air system
- OPERATOR STATION**
 - Noise proof steel-structured cab
 - Toughened light-color window
 - 6 silicone rubber damping support
 - Operable roof hatch, upper front window and left window
 - Rear window, alternate exit
 - Silent window wiper with washer
 - Adjustable inclined seat with adjustable armrest
 - AM-FM radio with digital clock
 - Foot rest and floor mat
 - Loudspeaker, rear view mirror
 - Seat belt and fire extinguisher
 - Cup holder and cab light
 - Ashtray alternate hammer
 - Storage box, literature bag
 - Hydraulic lockout control
 - Fully automatic air-conditioner
 - Cab visor
- ALARM LIGHTS**
 - Oil pressure alarm
 - Overheat alarm
 - Overheat alarm
 - Fuel level alarm
 - Voltage alarm
 - Engine speed alarm
- INDICATOR LIGHTS**
 - H working mode, S working mode
 - L working mode
 - Auto-idle, engine warm up
 - Oil level, engine coolant temperature
 - Travel speed
- OTHERS**
 - Standard battery
 - Lockup engine hood
 - Lockup fuel filler cap
 - Anti-skid film, handhold and passage
 - Travel direction mark
 - Hand grease gun
- OPTIONAL**
 - 1.4 m³ GP bucket
 - Cabin front and top guard
 - Breaker piping kit