

BRAND NEW
Long Reach Excavator



SANY
Quality Changes the World

Operating Weight : 54500 kg Bucket Capacity : 1.0 m³ Engine Power : 403 HP (300kW)/ 1800 rpm

India's No 1
55T Long Reach Excavator With
More power & Working Ranges

72 ft Reach
52 ft Depth



HIGHER REACH
HIGHER RELIABILITY
HIGHER PERFORMANCE



SY545C-10LR
HYDRAULIC EXCAVATOR

SPECIFICATIONS

SY545C-10LR

ENGINE

Model	ISUZU 6WG1X
Type	6 Cylinder, Inline, Water Cooled
Rated Engine Power	403 HP(300kW)/1800 rpm
Max. Torque	1950N.m @ 1400 rpm
Displacement	15.68 L

CONTROL SYSTEM

Control System	DOMCS Intelligent Controller
Working Modes	P, H, S, I
Remote Monitoring System	GPRS, GPS, GIS

HYDRAULIC SYSTEM

Main Pumps	2 Variable Displacement Axial Piston Pumps
Max. Flow	2 X 366lpm
Pilot Pump	Gear Pump
Travel Motor	2 Axial Piston Motor with Parking Brake
Swing Motor	Axial Piston Motor with Swing Holding Brake

RELIEF VALVE SETTINGS

Implement Circuit	34.3 Mpa
Swing Circuit	26.9 Mpa
Travel Circuit	31.4 Mpa
Pilot Circuit	3.9 Mpa

UNDERCARRIAGE & WORKING DEVICE

Track Shoes (Each side)	50
Upper Rollers (Each side)	2
Lower Rollers (Each side)	9
Std. Track	600 mm
Std. Boom	12000mm
Std. Arm	10000mm
Std. Bucket	1.0m ³

PERFORMANCE

Max. Travel Speed(High/Low)	5.4/3.1 km/h
Swing Speed	7.5 rpm

SERVICE REFILL CAPACITIES

Hydraulic Tank	480 L
Fuel Tank	680 L
Engine Oil	50 L
Radiator	24 L
Swing Device	14L
Travel Device	2x15L

CAB

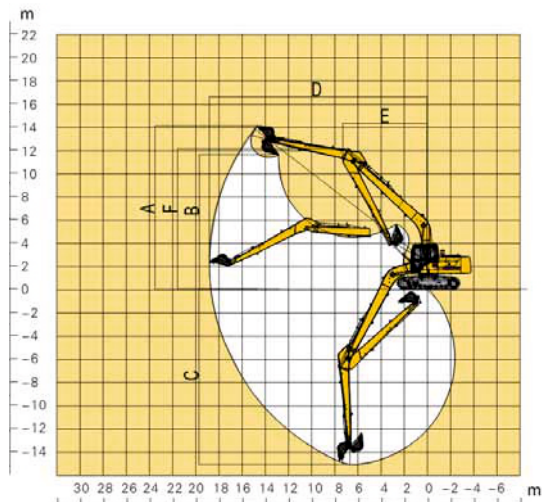
AC	Std.
Cabin Guard	Opt.

DIMENSION (Unit: mm)



A. Overall Length	18600
B. Overall Width	3560
C. Overall Height	3800
D. Upper Width	3290
E. Overall Height of Cab	3470
F. Std. Track Shoe Width	600
G. Track Gauge	2740
H. Min. Ground Clearance	560
I. Rear-end Swing Radius	3765
J. Distance between Tumbles	4415
K. Under Carriage Length	5440

WORKING RANGE



WORKING RANGE (Unit: mm)

Arm 10000

a. Max. Cutting Height	20500
b. Max. Dumping Height	19100
c. Max. Digging Depth	15740
d. Max. Digging Reach	22000
e. Min. Swing Radius	8200

SANY HEAVY INDUSTRY INDIA PVT. LTD.

HEAD OFFICE

Address : Plot No. E-4, Chakan Industrial Area Phase-III,
Village Kuruli, Taluka Khed, District Pune - 410501,
Maharashtra, INDIA.

Tel : +91 21 35670288, Fax: +91 21 35670300

E-mail : customercare@sany.in

Website : www.sany.in

Toll Free No.: 1800-209-3337



Material & specification are subject to change without prior notice in accordance with our continuous technical innovations. Featured machines in photos may include additional equipment.